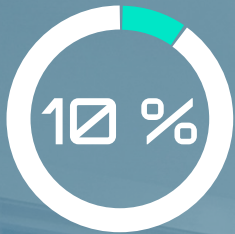


## Context



10% of our shower water is wasted by waiting for the water to warm up



That means an average between 5 and 10 liters per shower



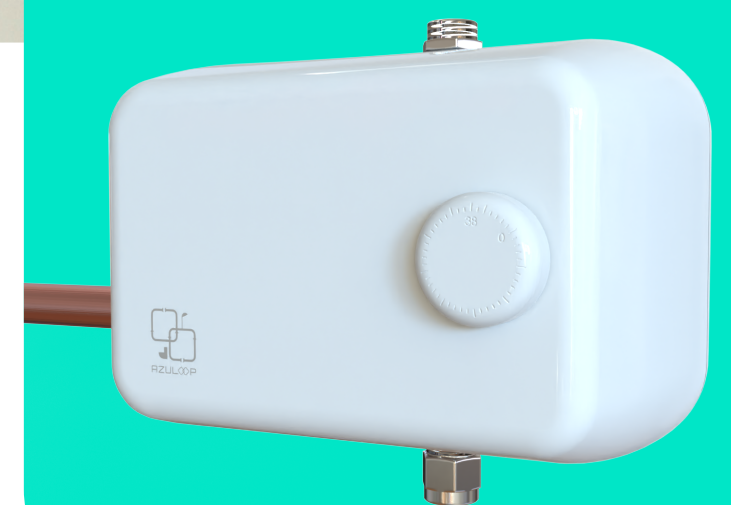
Which often adds up to 30 liters a day in a family household

## Usage

Set the desired temperature on the thermostat. The temperature sensor sends this to the microcontroller, which controls the shower's solenoid valves. If the water isn't warm enough yet, it's redirected to a tank above the toilet. Float sensors check if there's space and enough water for flushing.

## Solution

AzuLoop captures cold water before your shower heats up and stores it above the toilet, where it's automatically used for flushing.



Solenoid valves

Micro-controller

Float-level sensor

Temperature sensor

Solenoid valves

